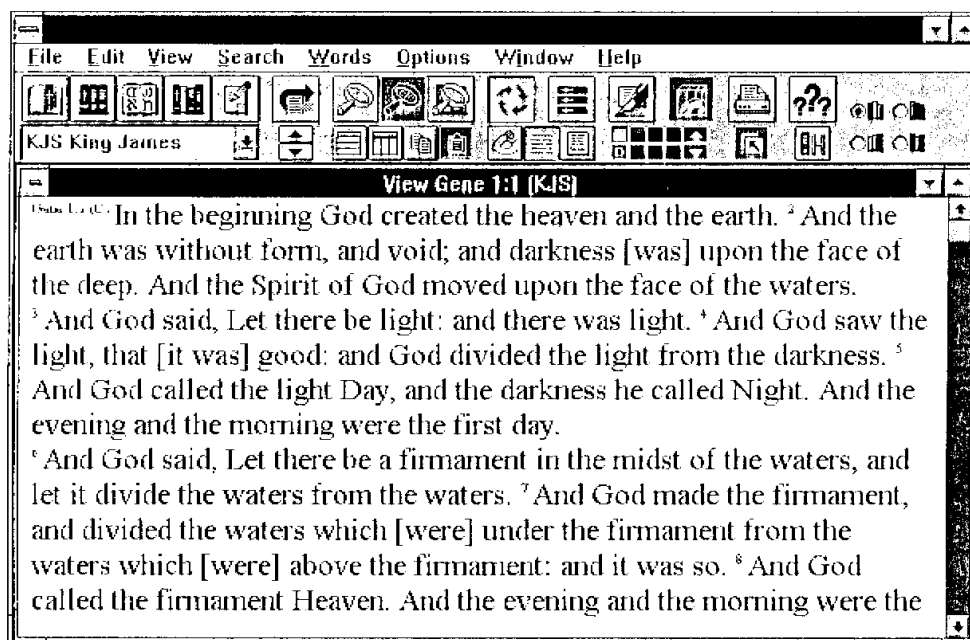


Chapter 2. The VIEW Mode

VIEW is the primary STUDY mode. VIEW lets you view and print Bible verses and provides access to the WORD, SEARCH, and PEEK modes. You are in VIEW mode whenever a Bible is in the active window.

You open Bibles by selecting New Study from the File menu, double-clicking the New Bible button on the Ribbon Bar, or setting new Window Content from the View menu or from the Ribbon Bar.



The first verse displayed has its complete reference in the window title. This is the “current verse.” As you scroll through the verses, this reference updates to reflect the new current verse.

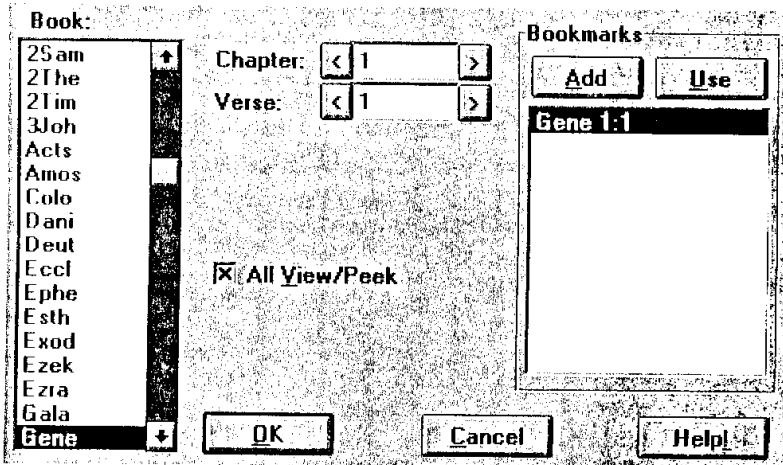
Moving through VIEW

You can move to other verses using the following:

<u>Movement</u>	<u>Keystroke(s)</u>	<u>Scroll Bar Click</u>
Go to prior book	<Home>	n/a
Go to next book	<End>	n/a
Go to prior chapter	<PgUp>	Above Scroll Box
Go to next chapter	<PgDn>	Below Scroll Box
Move up one verse	<Up> or <Left>	Up Arrow
Move down one verse	<Down> or <Right>	Down Arrow
Move down window-full	<Space Bar>	n/a
Quick Go-to dialog box	<Ctrl><G>	n/a

Moving to a Different Verse

You can move to a new verse via the New Verse dialog box. Click the New Verse button or select New Verse... from the View menu. The dialog box appears:



Select a new book. If you press a letter key, the book list advances to the first book starting with that letter. You can keep pressing it until the list advances to your book. Then select your chapter and verse. Valid selection ranges display when these fields are active

Note: If you enter a value that is too high, *Companion* will automatically reduce it to the maximum allowable value.

All View/Peek

The All View/Peek check box lets you choose whether to move all open VIEW and PEEK windows or only the active window.

Note: “New Verse” movements are not automatically synchronized, since that would prohibit you from viewing parallel passages. The All View/Peek option lets you control whether you move just the active window or all applicable windows and is completely independent of other synchronization options.

Bookmarks

The Bookmarks selection lets you store and recall up to 20 commonly accessed verses.

To add a verse to the Bookmarks list, set the desired book, chapter and verse, then push the ADD button.

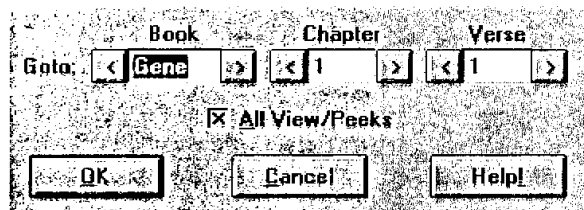
To select a verse from the Bookmarks list, simply select one of the verses and push the USE button. The New Verse dialog box updates to the selected verse.

Notes:

1. You do not need to delete verses from Bookmarks. If you try to add a 21st verse to Bookmarks, all verses will be shifted up one place. The first verse will be deleted from the list and the new verse will be placed at the end.
2. All verses ADDED to the Bookmarks are saved, even if you Cancel out of the dialog box. So, you can set a number of verses and then select Cancel to return to your study.

Quick Go-to Dialog Box

To jump to a new verse in VIEW or PEEK mode you can just press <Ctrl><G> and the Quick Go-to dialog box appears:



The Quick Go-to dialog box automatically matches the closest Bible book name as you type in the Book field. Also, it advances to the next field when a <Space>, <:>, or

<.> character is typed. Think of it as a “command-line with spin buttons.” For example, if you type “Ge 2:1” and press <Enter>, you’ll jump to Genesis 2:1.

Book

The Book field automatically matches a book to your keystrokes as you type. For instance, if you start with a <G>, the field fills with “Gala”. Then, if you type <e>, it fills with “Gene”. To advance to the Chapter field, you can just press <Space> or any other non-alphanumeric key.

The Spin Buttons move through available books in Bible order.

Chapter

The Chapter field lets you enter a chapter number. To advance to the Verse field, press <:> or any other non-alphanumeric key.

The Spin Buttons move through available chapters for your Book.

Verse

The Verse field lets you enter a verse number. To advance to the All View/Peek field, press <Space> or any other non-alphanumeric key.

The Spin Buttons move through available verses for your Chapter.

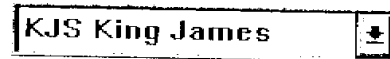
All View/Peek

The All View/Peek check box lets you choose whether to move all open VIEW and PEEK windows or only the active window.

Note: The “Quick Go-to” movements are not automatically synchronized, since that would prohibit you from setting up to view parallel passages. The All View/Peek option lets you control whether “Quick Go-to” moves just the active window or all applicable windows and is completely independent of other synchronization options. This gives you the greatest flexibility in setting up your Bible studies.

Changing Bible Versions

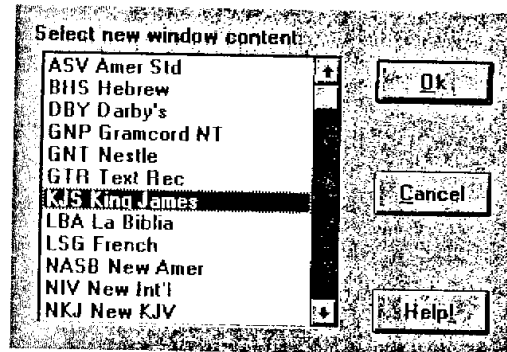
To change the Bible version, click the Ribbon Bar pull-down list box and select a version. Or, use the Window Content buttons to automatically make the next or previous version on the list appear in the window:



-  Window Content Previous button
-  Window Content Next button

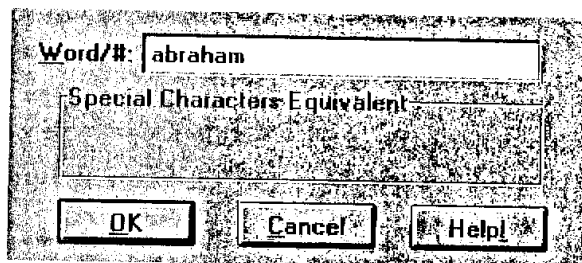
Hotkey tip: Pressing <Ctrl><V>, performs the same function as the Window Content Next button.

You can also select Switch Window Content... from the View menu and select a Bible from this dialog box:



Forward and Backward Find

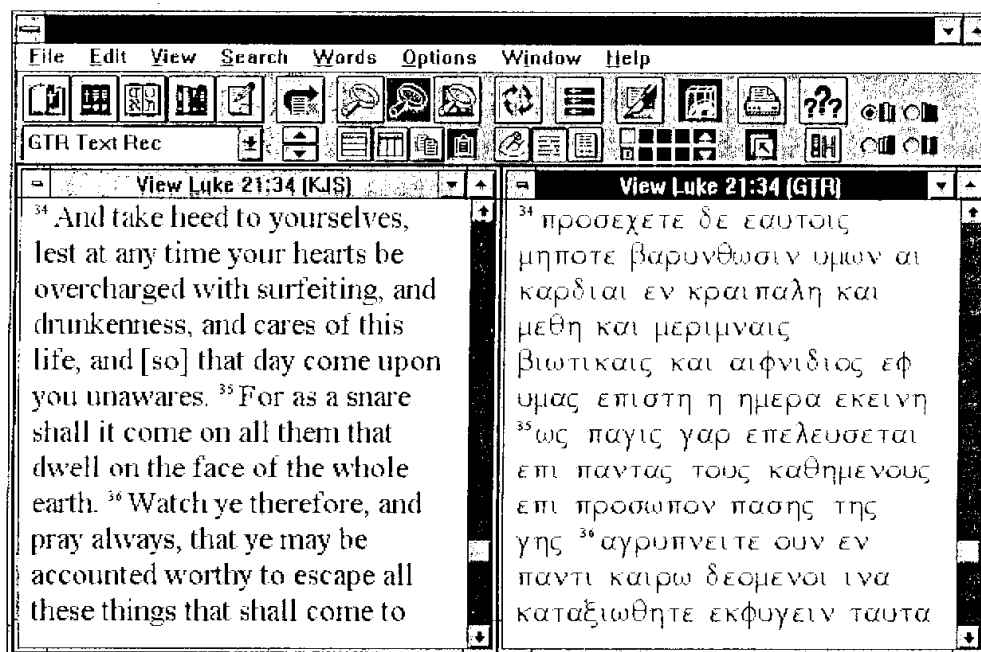
Forward and backward “finds” advance you to the next or prior verse containing a specified word. Select Find... from the Search menu and enter a word:



Companion advances to the next verse containing our word “Abraham.” After you enter a word, use the Next (F3) and Previous (F4) commands on the Search menu to move to the various occurrences of the word.

Multiple VIEW Windows

You may have unlimited STUDY windows in VIEW mode. Use them to compare parallel passages or Bible versions. To tile your windows, click one of the two tiling buttons on the Ribbon Bar. Here is an example of two windows tiled vertically.:



Closing VIEW Windows

To remove the active VIEW window, select **Close** on the File menu or double-click the rectangle on the upper left corner.

Synchronizing VIEW Windows

You can synchronize multiple VIEW windows to each other to examine parallel passages. Set synchronization to ON in the Options menu or double-click the Synchronize button on the Ribbon Bar. This causes cursor movements in the active window to be imitated by the other visible VIEW windows.

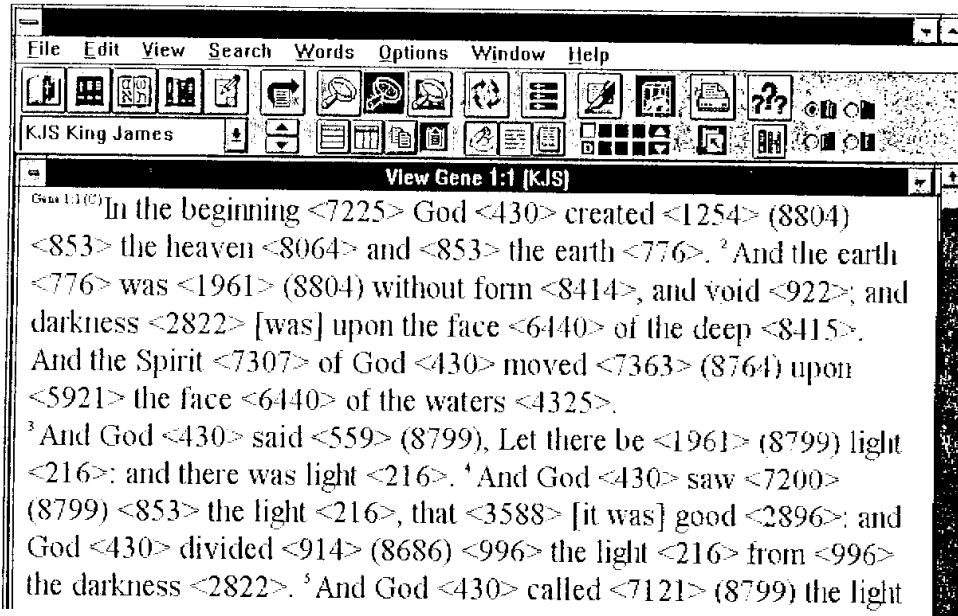


If a VIEW window is minimized to an icon, it is not included in the synchronization. So, if you have a window you do not want to synchronize when you are studying parallel passages, just minimize it to an icon.

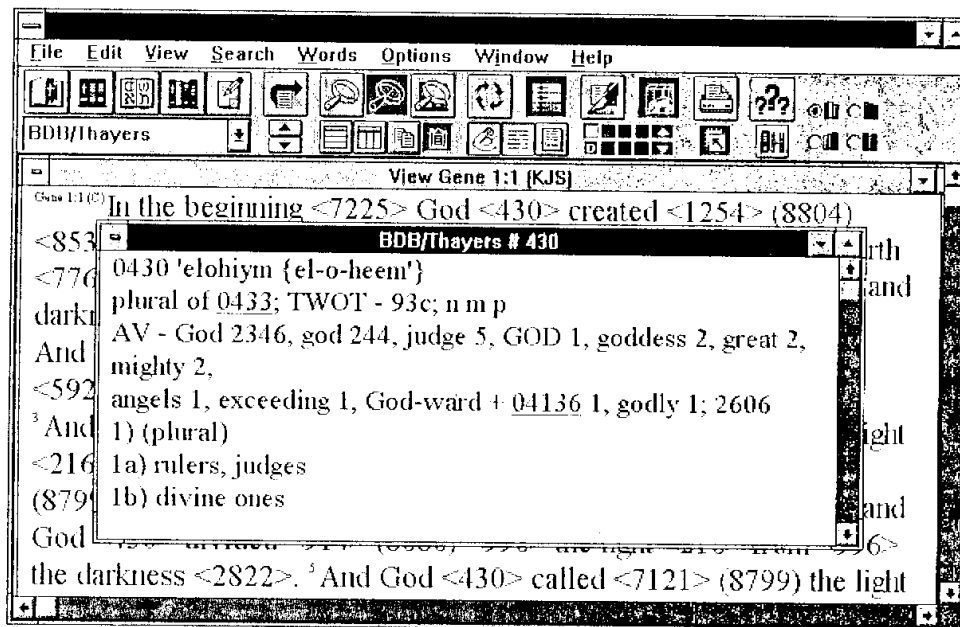
Note that for the purposes of synchronization, a PEEK window is synchronized and considered the same as a VIEW window.

Using Strong's Numbers in VIEW

You can embed Strong's numbers in the KJS (if you have the STR database or another compatible database) by clicking the Show Strong's button or selecting Show Strong's #'s on the Screen Format dialog box that you access from the Options menu. The result looks like this:



Original Strong's numbers appear in angle brackets, such as <1>. Extended parsing values appear as in parentheses (9000). If you double-click <430>, for instance, this LEXICON window appears:



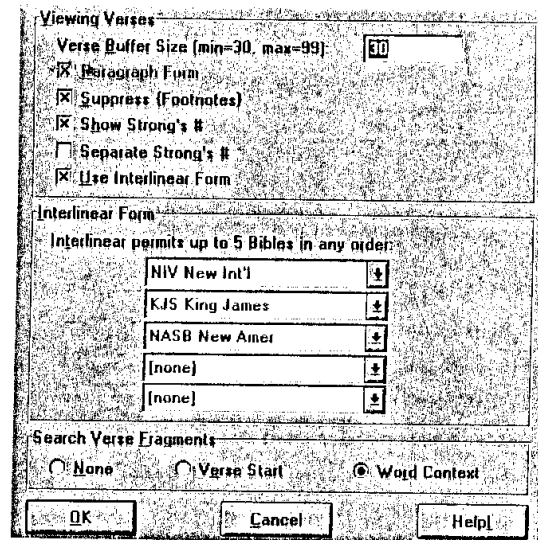
You can view the LEXICON entry and hypertext to other definitions.

You can also choose to have each Strong's number appear on its own line in a VIEW window by checking Separate Strong's # on the Screen Format dialog box.

Setting Interlinear Form

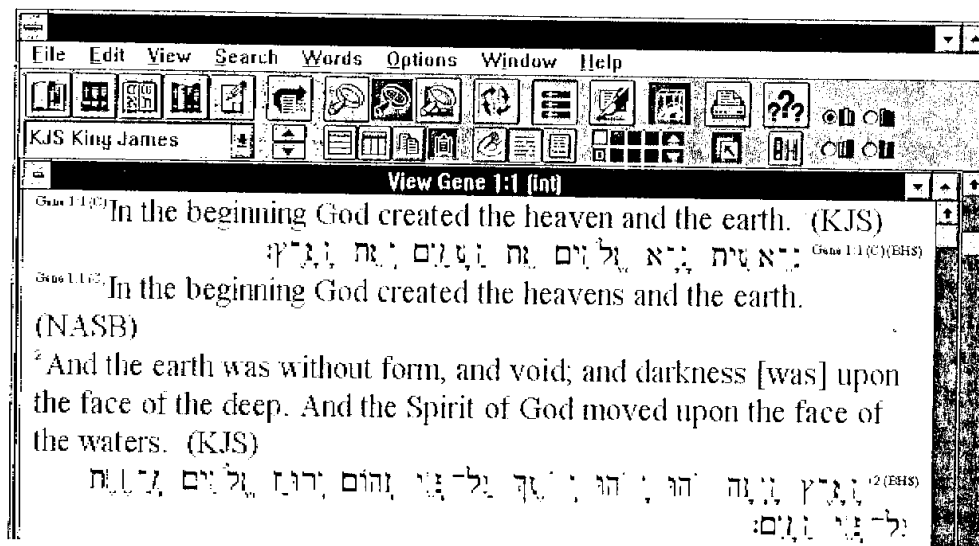
The Set Interlinear Form area of Screen Format dialog box lets you customize the order of interlinear Bible versions by selecting up to five Bible versions. Choose Screen Format from the Options menu. Choose the selections for the Bible versions you want displayed, in order.

Companion Bible database abbreviations are shown in upper case.



Using Interlinear Form

Once you have defined the Bibles to be used in the Interlinear Form, you can enable Interlinear Form for the current VIEW window by clicking the Use Interlinear Form button or by checking that option on the Screen Format dialog box. The following is an example of the KJS, optional BHS, and NASB in interlinear form:

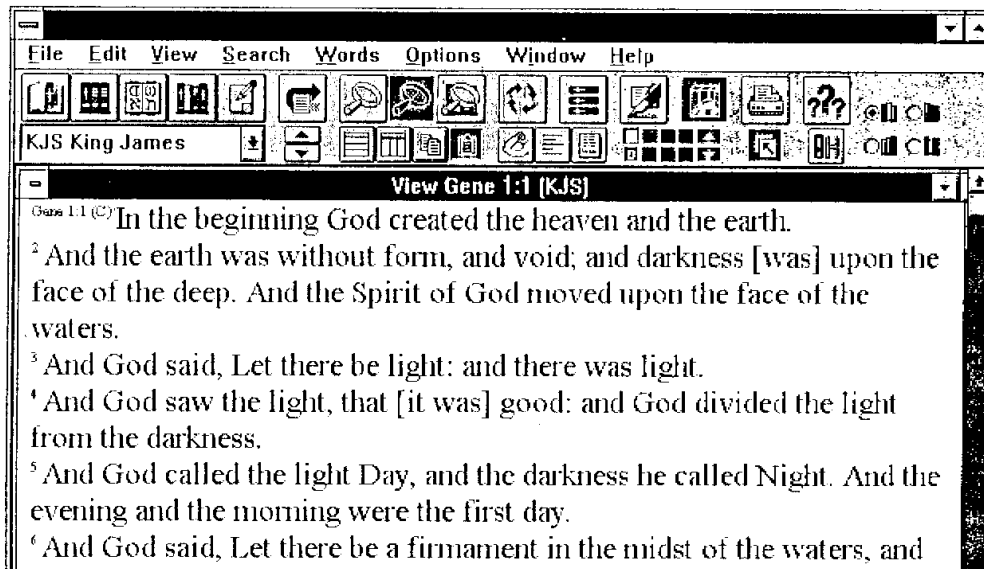


Other VIEW Options

Paragraph Form

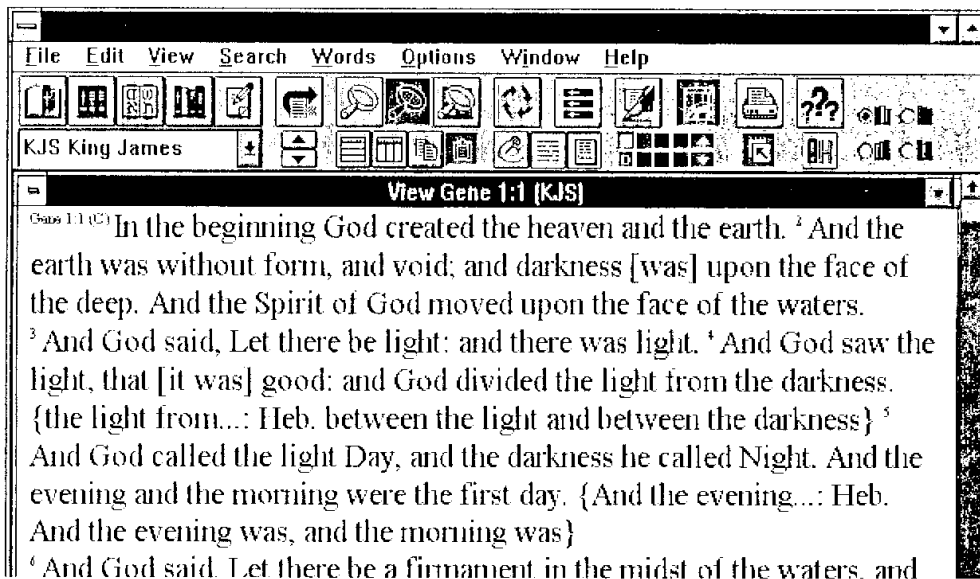
Paragraph Form controls formatting of the verses on the screen.

It puts the maximum number of verses in the window. If you do not use Paragraph Form, the verses are separated:



Suppress {Footnotes}

Bible {Footnotes} display in braces {}. See Gene 1:4 below. If Suppress {Footnotes} is enabled (by means of the Screen Format dialog box), the footnotes will not appear.



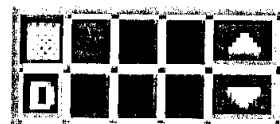
VIEW Study Helps

Focus Word

Some Bible study methods encourage you to examine Bible passages for repeated key words. You can have *Companion* highlight a single word in the Bible as you scroll through the text. Choose “Enter Focus Word” from the View menu and enter a word you wish to focus on. It will highlight just like a word you searched for. To turn Focus Word off, delete the word from the data entry field.

Colorizing Your Bible(s)

Companion supports “Colorizing” (or highlighting) your Bible verses with six different background colors. This function is only performed on the Ribbon Bar and requires the use of a mouse. You can use Colorizing to signify related concepts or ideas (Salvation, Law, Grace, etc.) within a passage or your entire Bible. You can also use Colorizing to select verses to be printed or copied to the Clipboard. You can also use Colorized verses as bookmarks.



Turning Colorizing ON

Check the small checkbox in the upper left corner of the Colorizing buttons.

Colorizing a Verse

First, make sure the verse you wish to Colorize is in the View window and that Colorizing is turned ON. Then, click the Color button. Then click the mouse anywhere within the verse you wish to Colorize.

Returning a Verse to its Default Color

Then, click the “D” (Default) Color button. Then click the mouse anywhere within the verse you wish to de-Colorize.

Copying Colorized Verses to the Clipboard

Choose Copy from the Edit menu. Select a verse range. Check the Send Only Color Verses checkbox, and select one or more colors to copy. Only those Colorized verses within the verse range will be copied.

Printing Colorized Verses

Click the Print button on the Ribbon Bar or choose Print from the File menu. Select a verse range. Check the Send Only Color Verses checkbox, and select one or more colors to print. Only those Colorized verses within the verse range will be printed.

Searching for Colorized Verses

First, make sure that Colorizing is turned ON. Then, click one of the Color buttons. If there is a prior verse with that color, the UP arrow next to the Color buttons activates. Similarly, if there is a verse with that color after your current verse, the DOWN arrow activates. To jump to either the prior or next colored verse, just click the UP or DOWN buttons respectively.

Turning Colorizing OFF

Uncheck the small checkbox in the upper corner of the Colorizing buttons. Your verse color selections are preserved and can be restored by re-checking the checkbox.