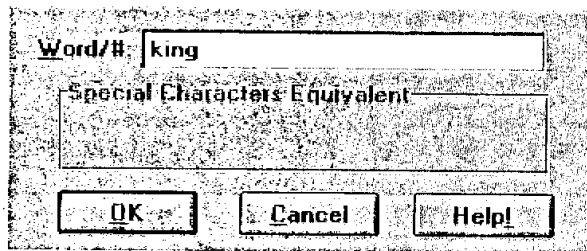


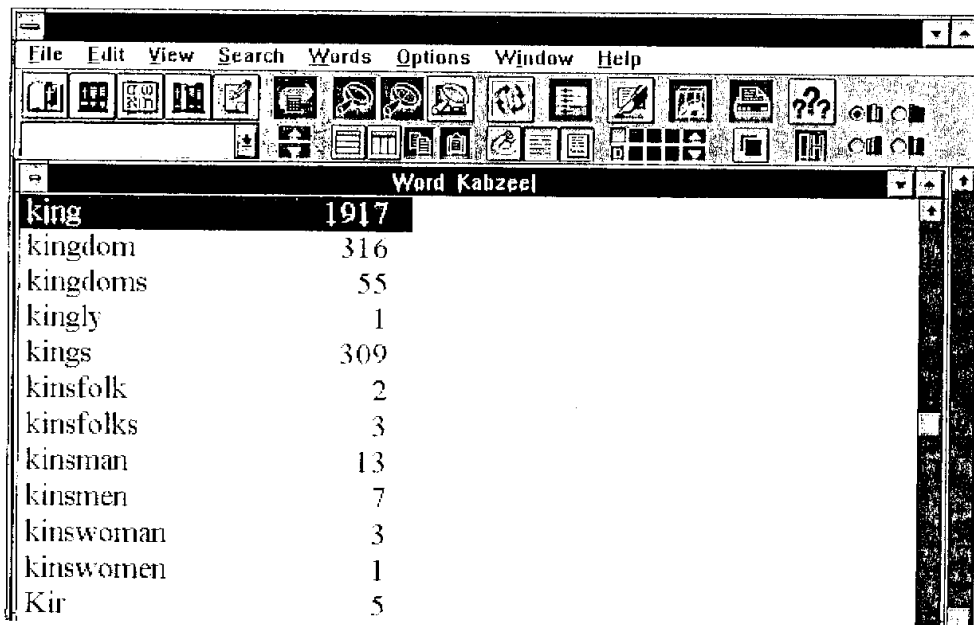
Chapter 3. The WORD Mode

The WORD mode lets you perform word studies and logic searches on your current VIEW window Bible text. To enter the WORD mode, open the WORD List from VIEW by selecting Word List... on the Words menu. The following dialog box appears:



Type the word you want to examine. You can type in part of the word as well. It is matched as closely as possible.

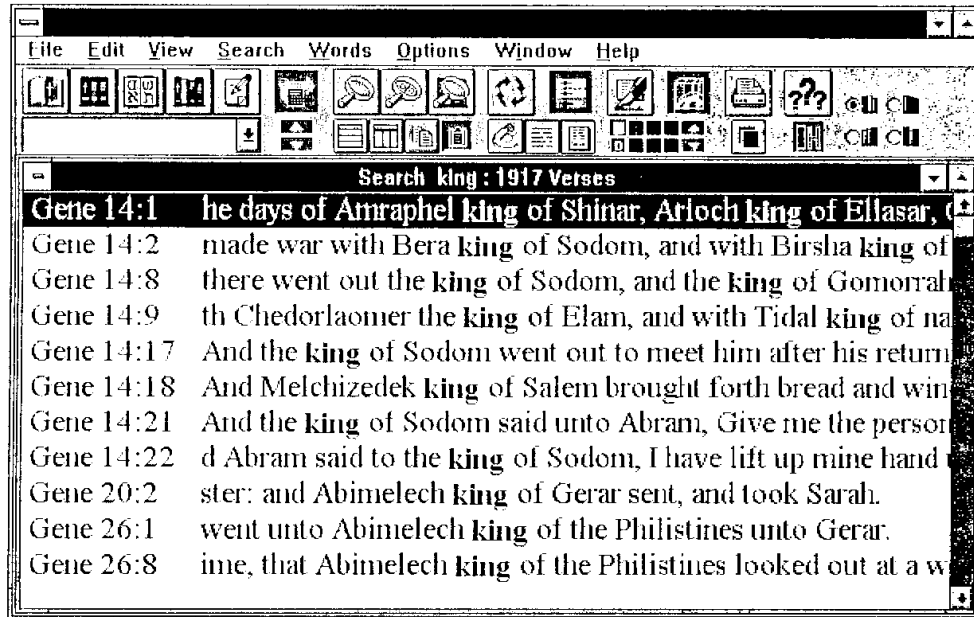
If you enter “king” the result looks like this:



The number shown for a word is the number of *verses* in which the word occurs in the *whole* Bible. The word could be in a verse more than once. The number does *not* reflect the current search range.

SEARCHing from the WORD List

You can SEARCH for a word by pressing <Enter> or double-clicking a word. If you search on “king” you get:



The SEARCH confines itself to the range set in the Search Ranges dialog box, which you access from the Search menu.

Case in the WORD List

Some words appear in the Bible in various cases; such as, “LORD,” “Lord” and “lord.” WORD List ignores case in searches. (It would find all three versions of “Lord.”) The case shown in the WORD List (*Companion* databases) reflects the *first* time it occurs in the Bible text. You can direct a Word/Phrase SEARCH to enforce case.

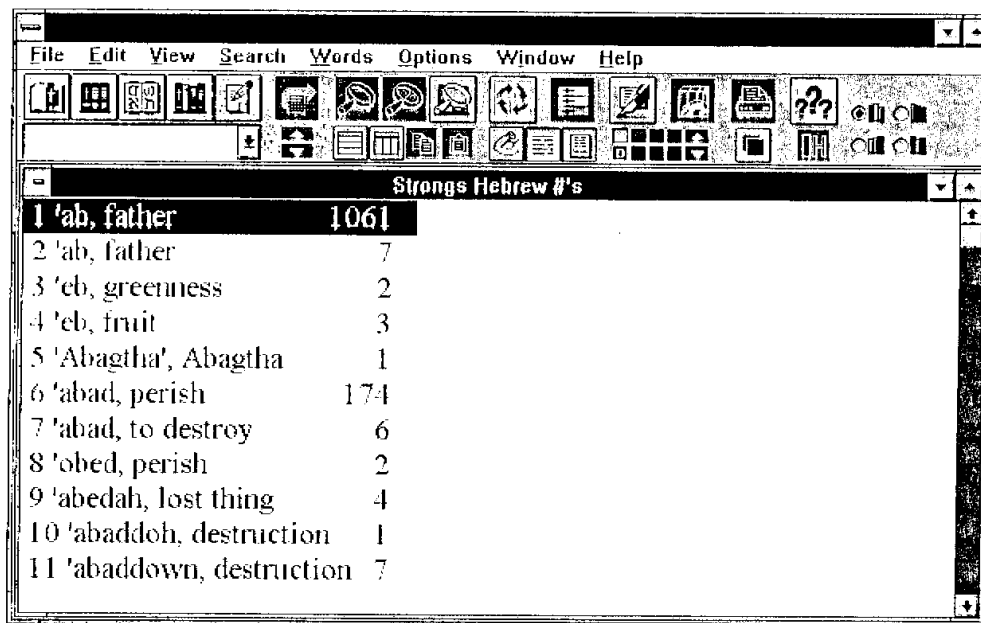
Entering Spanish/Greek/Hebrew

If you want to type accented characters for a *Companion* Spanish database, type an apostrophe *before* the accented character. For instance, to type an accented *e* type ‘*e*. The proper characters will appear in the special window below.

If you are typing in Greek or Hebrew, the characters in the selected screen font will appear in the special window.

Entering Strong's Numbers

If you have the STR database, you can enter a Strong's number instead of a word. (Prefix Old Testament numbers with a zero "0." Example: OT #1 should be "01.") WORD List shows the number, its transliterated word, and the most common KJV rendition of that number:



At this point, you can view the LEXICON entry by clicking the New Lexicon button or by picking New Lexicon from the File menu. You can even synchronize LEXICON to the Strong's Word List by clicking the Synchronize button.



Then, as you scroll through the Strong's Word List, the LEXICON updates to the current entry.

Scrolling the WORD List

Movement

Go to beginning of words

Go to end of words

Move up one line

Move down one line

Go to top of window, scroll if req'd <PgUp>

Go to end of window, scroll if req'd

Keys

<Home>

<End>

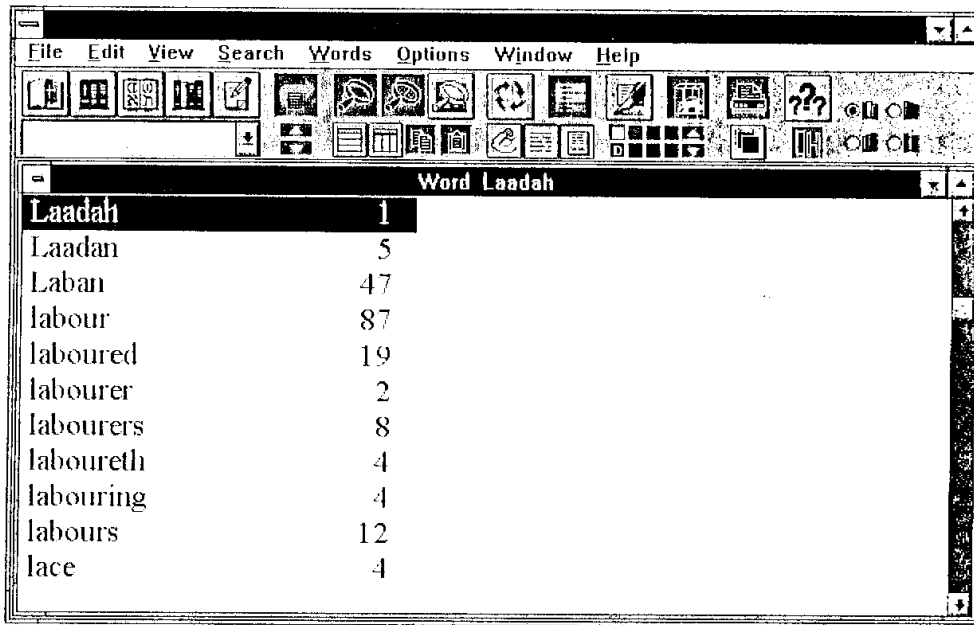
<Up> or <Left>

<Down> or <Right>

<PgDn>

Moving to a New Alphabet Letter

You can press <A> through <Z> to move to an alphabet letter. For example, if you pressed <L> after looking up “king,” you would see:



Restarting the WORD list

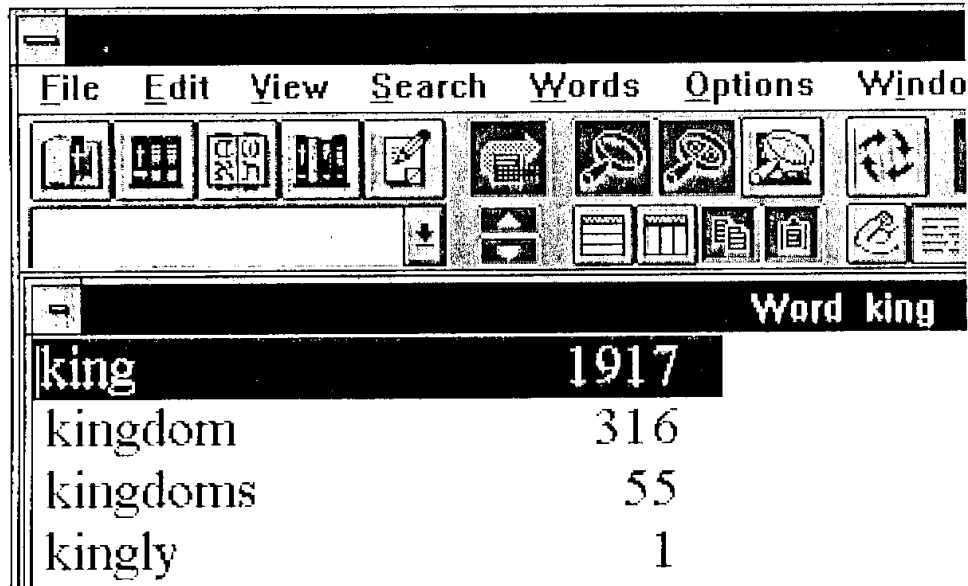
While you are in the WORD list, you can restart it to a new word by choosing Word List... from the Words menu.

AND/OR Logic Searches from the WORD List

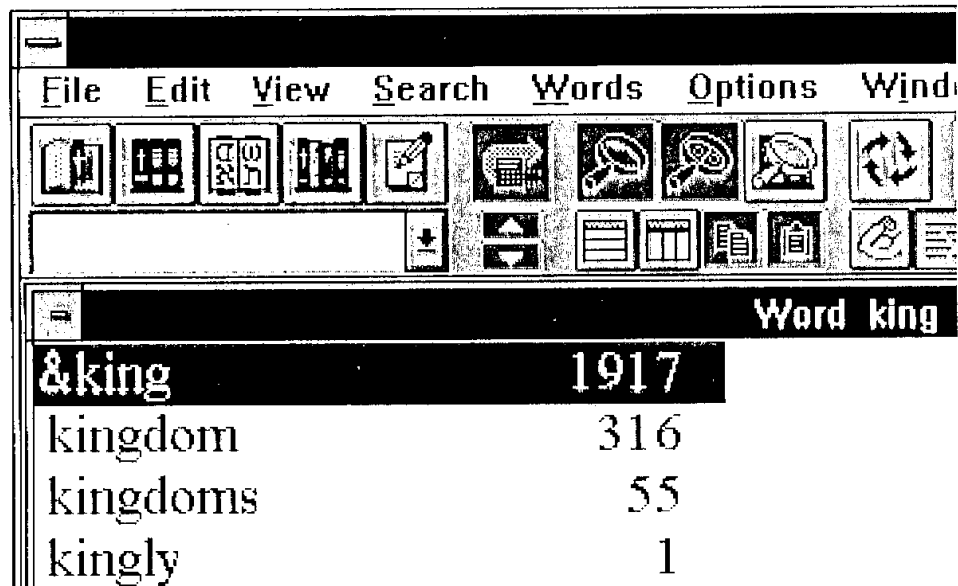
Logic searches are for multiple words. AND logic requires each of the words to be present in a verse to count as a “hit.” Use it to examine related words or subjects. OR logic only needs one word to be present in a verse to count as a “hit.” Use OR logic in synonym searches such as “sin” OR “transgression,” and for variations like “sin” OR “sins.” Select your search logic on the Words menu.

You specify your logic search words by “toggling” them ON. To toggle a word, move the selection bar to the word and press the <Space> bar (or select Toggle on the Edit menu). A special character appears beside the word. If you press <Space> bar again, the character is removed. Only those words that are toggled ON (the ones with the special character next to them) are used for the search.

The “|” character beside a toggled word is a reminder that you are using OR logic. In the following example, “king” is toggled under OR logic:



The character “&” represents AND logic. AND logic looks like:



Change search logic in the Words menu. You can choose AND or OR logic from the Word List Logic dialog box. If you change logic while words are toggled, the new logic will be applied to all previously toggled words.

To begin a logic search, select Search Toggled on the Edit menu. This begins a search on the combined words. The search takes only a little longer than a single word search. The following shows some results of an OR logic search on “king” OR “queen”:

