

Chapter 9. Options

This Chapter covers important options user's often need to set. See the menu summary in Chapter 11 for more information about items on the Options menu.

Screen Format Dialog Box

Viewing Verses

Verse Buffer Size (min=30, max=99):

Paragraph Form

Suppress (Footnotes)

Show Strong's #

Separate Strong's #

Use Interlinear Form

Interlinear Form

Interlinear permits up to 5 Bibles in any order:

KJS King James	↓
BHS Hebrew	↓
NASB New Amer	↓
[none]	↓
[none]	↓

Search Verse Fragments

None Verse Start Word Context

OK Cancel Help!

Verse Buffer Size

Verse Buffer Size controls the amount of disk buffering *Companion* performs while VIEWing verses. The lower the number, the *Companion* refreshes disk buffers both faster and more often as you scroll through verses. In general, low values are best for slow or CD-based databases. Often, only one-half of the verses buffered are displayed in the window. If they do not fill up the window, the rest are blank. There is nothing wrong with this, but you can better fill the window (for aesthetics) by increasing this number or by disabling Paragraph Form (see below). Valid range: 30 to 99.

Paragraph Form

Paragraph Form controls formatting of the verses on the screen. It puts the maximum number of verses in the window. If you do not use Paragraph Form, the verses are separated in the window.



Show Strong's

Show Strong's # embeds Strong's numbers in the KJS database (if you have the STR) or in a compatible database.



Separate Strong's

Separate Strong's # puts each Strong's number (and its preceding text) on a separate line. If un-checked, the text appears in a run-on fashion.

Use Interlinear Form

Use Interlinear Form enables interlinear display of Bibles.

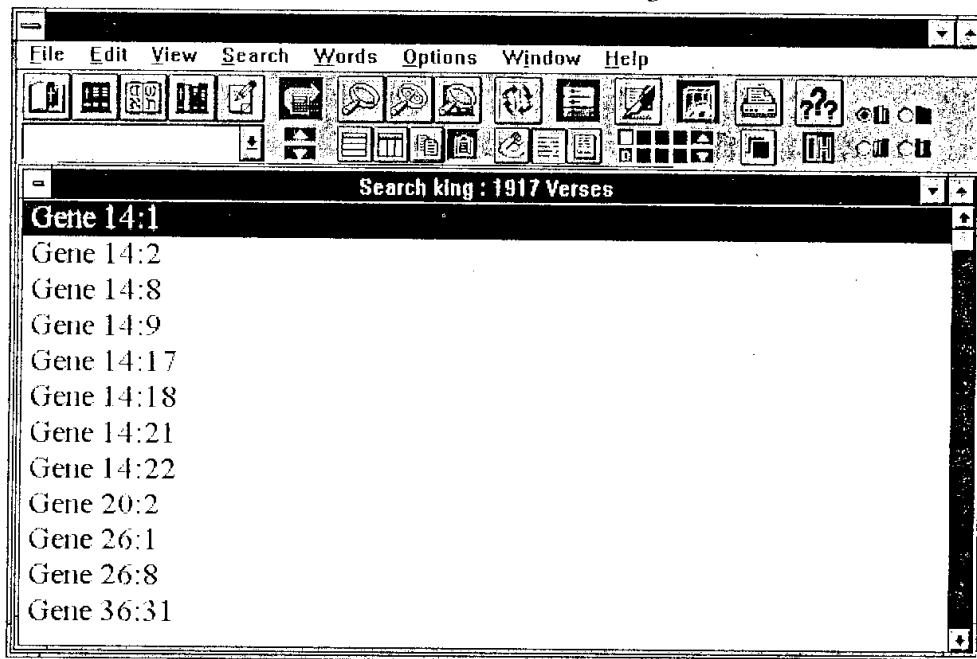


Interlinear Form

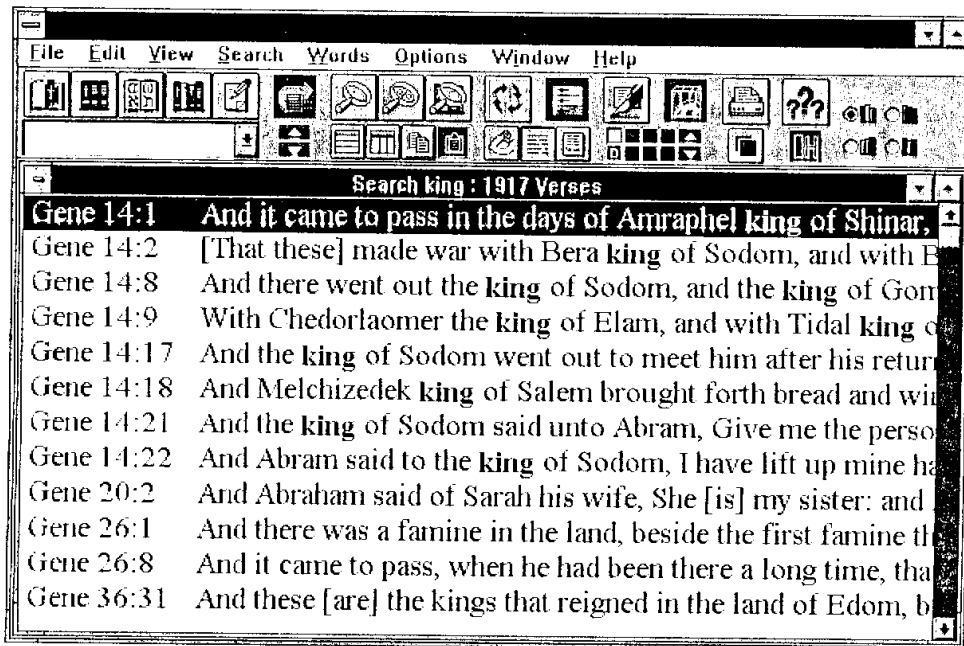
You can select up to five available Bibles in any order.

Search Verse Fragments

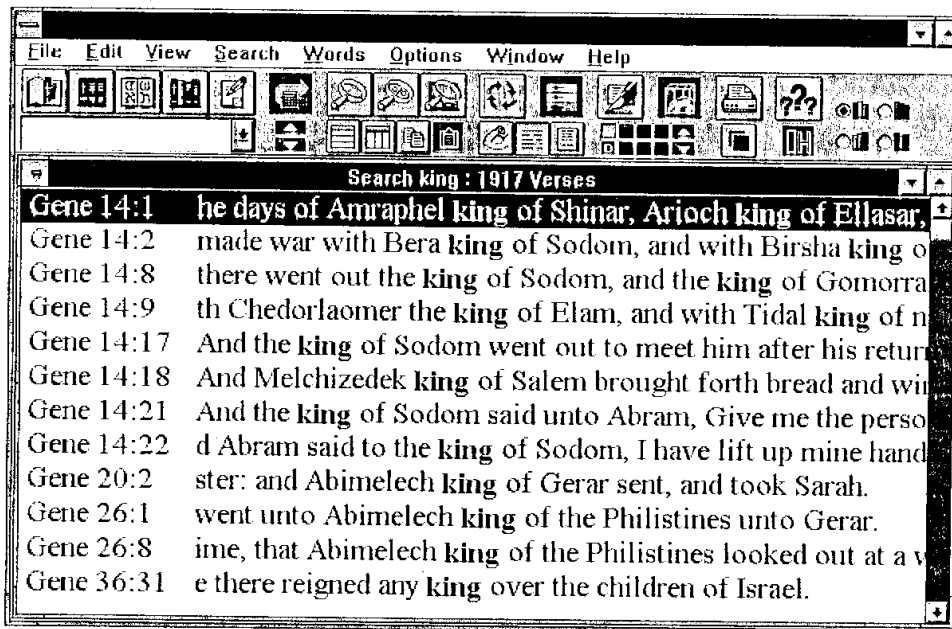
Search Verse Fragments controls display of SEARCHes. If Verse Fragments are set to None, only verse references appear. "None" is the fastest option for CD-based verses. The result for "king" looks like this:



If you use Verse Start, the beginning of each verse appears:



If you select Word Context, at least one of the search word(s) is in the fragment:



Word Context helps you quickly screen word usage. If there is more than one search word, the first is used to begin the fragment.

Font Options

Companion takes a unique approach in Windows. Most Windows programs use WYSIWYG (What You See Is What You Get) screen representations of what you would get if you printed it. *Companion* uses WYSIWYS and WYPIWYP (What You See Is What You See *and* What You Print Is What You Print). Since *Companion* is used primarily for on-screen interaction with Bible and Resource databases, we let you set screen and printer fonts separately. This has two benefits:

- You can select a bigger screen font than your printer font.
- You can use a screen font which is not available on your printer.

Defining screen and printer fonts is explained in the following sections.

Screen Fonts

Choose Screen Fonts from the Options menu. This dialog box appears:

Set Normal

Set Normal lets you select a font for “normal” Bible text, such as English Bible databases.

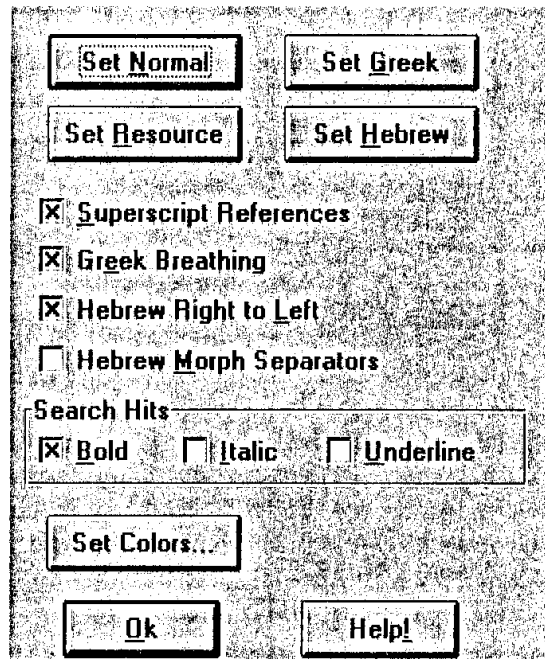
Important: This font size overrides the Greek and Hebrew font size settings.

Set Greek

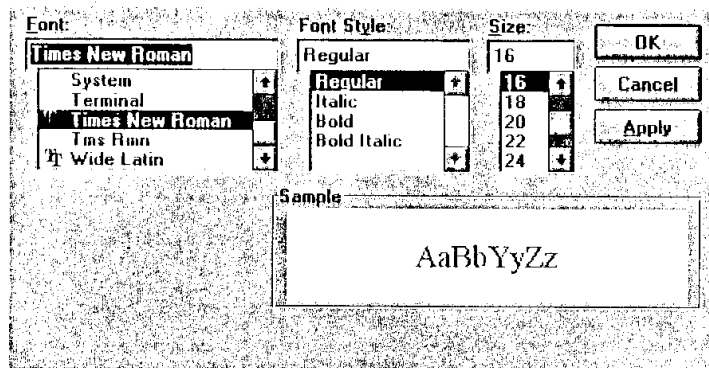
Set Greek lets you select a font for Greek databases. This lets you use the Symbol font or our “Greek Parse” font, which offers Greek characters with breathings along with optional parsing characters. **Note:** This font’s size is ignored and the “Normal” font size is used.

Set Hebrew

Set Hebrew lets you select a font for our optional BHS database. You can use our Hebrew font to display BHS right to left with vowel pointing. **Note:** This font’s size is ignored and the “Normal” font size is used.



Set Resource



Set Resource lets you select a standard English font for the Hypertext mode (from the Windows standard Font dialog box).

Note: This selection is only for Hypertext mode. Resources in Edit/Display mode use the standard Windows editing font.

Superscript References

If Superscript References is checked, Bible verse references in the Bible text appear as ^{superscripts}.

Greek Breathing

Greek Breathing controls the display of the optional breathings and accent marks in the optional GNT, GNP, and LXX Greek databases. The GTR database contains no breathings, so this option has not effect on the display of this Greek database.

Hebrew Right to Left

Hebrew right to left displays the optional BHS database in right to left or left to right mode.

Hebrew Morph Separators

Hebrew Morph Separators turns special “*” markers on and off in the optional BHS database. These markers separate the component morphological Hebrew words within each applicable word.

Search Hits

You can choose the font effects you want to use to distinguish SEARCH words when displaying Bible text in SEARCH and PEEK modes. You can choose any combination of **Bold**, *Italic* and Underline.

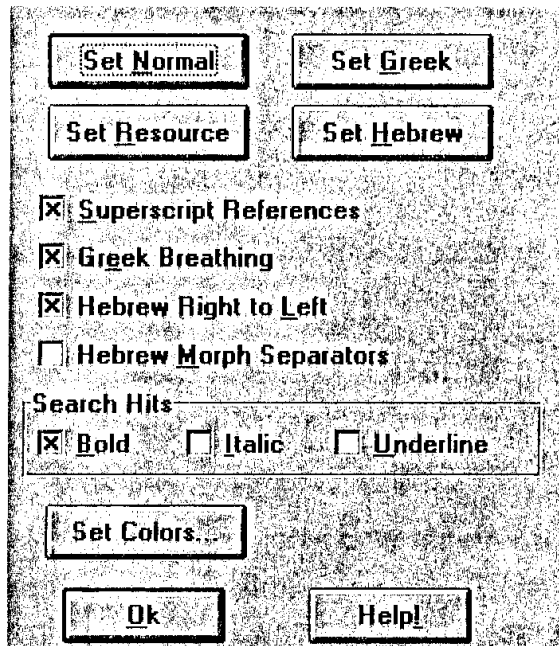
Set Colors...

Set Colors... lets you turn *Companion*'s special text colors for different window types on or off. You can also redefine the colors used.

Note: Depending upon your Windows video driver, your selection of colors is often limited to a standard 16 colors, only a few of which are appropriate against a traditional light-colored background.

Printer Fonts

Companion gives you control over the fonts used in screen displays. To change your screen fonts, select Printer Fonts from the Options menu. If the option is grayed, you do not have a Windows default printer. See Section 8, “Printing” for more details. The Printer Fonts dialog box appears:



Set Normal

Set Normal lets you select the font for “normal” Bible text, such as English Bible databases.

Important: The font size for this font overrides the font size of the Greek, Hebrew, and Resource fonts.

Set Greek

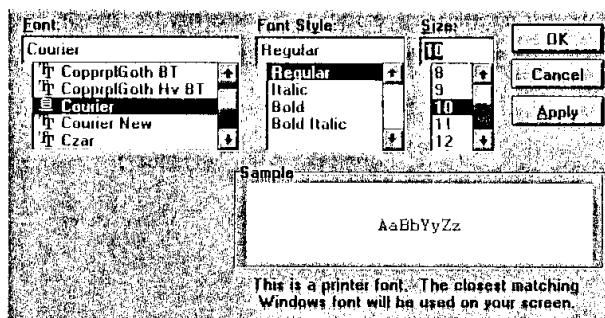
Set Greek lets you select a font for Greek databases. This lets you use the Symbol font or our Greek font, which offers Greek characters with breathings. **Note:** This font’s size is ignored and the “Normal” font size is used.

Set Hebrew

Set Hebrew lets you select a font for our optional BHS database. This lets you use our Hebrew font to display BHS Right to Left with vowel pointing. **Note:** This font’s size is ignored and the “Normal” font size is used.

Set Resource

Set Resource lets you select a font for Resource and NOTEPAD materials. They often look best in a mono-spaced font such as Courier, rather than a proportionally spaced font.



Note: This font's size is ignored and the "Normal" font size is used.

When you pick Set, you define the font using the standard Windows Font dialog box.

Superscript References

If Superscript References is checked, Bible verse references in the Bible text will appear as ^{superscripts}.

Greek Breathing

Greek Breathing controls the printing of the optional breathings and accent marks in the optional GNT, GNP, and LXX Greek databases. The GTR database contains no breathings, so this option has not effect on the printing of this Greek database.

Hebrew Right to Left

Hebrew Right to Left prints the optional BHS database in right to left or left to right mode.

Hebrew Morph Separators

Hebrew Morph Separators turns special "*" markers on and off in the optional BHS database. These markers separate the component morphological Hebrew words within each applicable word.

Search Hits

You can choose the font effects you want to use to distinguish SEARCH hit words when printing from SEARCH and PEEK modes. You can choose any combination of **Bold**, *Italic*, and Underline.

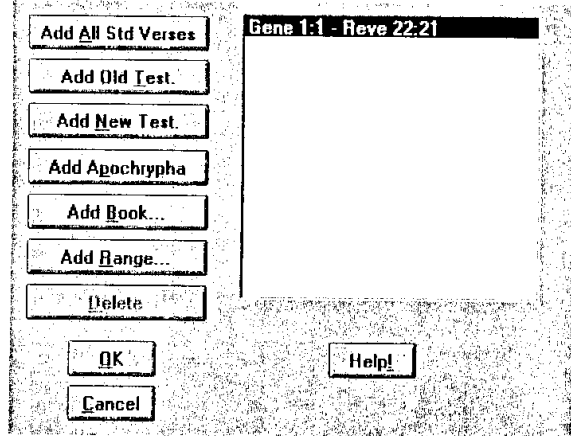
Set Colors

The Set Colors options are not used in *Companion's* printing.

Search Range(s)

Range(s) allows you to define up to 26 different search ranges—either continuous or non-continuous. The dialog box looks like:

The current range is now the standard Bible, set by the Add All Verses button. The Add Old Test. button creates a range for the Old Testament. The Add New Test. button creates a range for the New Testament. To add a specific book, use the Add Book... button. For complete control, choose Add Range... to enter a specific verse range, spanning any number of books, chapters and verses.



You can create overlapping ranges. It's redundant, but it's no problem. To delete a sub-range (if there is more than one), use the Delete button.

When you select the OK button to exit, *Companion* builds the cumulative search range that encompasses all defined ranges. This cumulative range is used for all subsequent searches until redefined.