

1

GRAMCORD Parsing

This chapter helps you learn how to use the GRAMCORD Parsed Greek New Testament to:

- View the GRAMCORD Parsing
- View the GRAMCORD Parsing Extensions (Lemma, Syntax)
- Find All Forms of a Greek Word
- Print the GRAMCORD Parsing



1 - 2 GRAMCORD Parsings (GNP)

How to Use the GRAMCORD Parsed Greek New Testament (GNP)

Lesson Overview



In this Lesson you will learn how to use the GRAMCORD Parsed Greek New Testament (GNP). The GRAMCORD Parsed Greek New Testament (called "GNP" in the List of Texts) is a Biblical Text, like any other Text or Version, which shows the Parsing and Lemma (or Lexeme, *i.e.*, Lexical listing form) for every word in the Greek New Testament (NA^{26/27}/UBS^{3/4}). In addition, several other Greek Tools are dynamically linked to the GNP (Lexicon, Syntax Notes, *etc.*) to provide additional information about the Greek word. Thus in this Lesson you will learn how to:

- Access and View the GRAMCORD Parsed Greek New Testament.
- Access and View the GRAMCORD Parsing Extensions, the linked Lexicon, and the linked Syntax Notes.
- Search for all other occurrences of any Form of any Word in the GRAMCORD Parsed Greek New Testament.
- Use the GRAMCORD Parsed Greek New Testament in conjunction with the regular Nestle Greek New Testament and the Bible Translations.



NOTE: This Tutorial assumes that you have purchased the Bible Companion *Teachers' CD*. If you are using GRAMCORD from a SeedMaster CD or from Floppy Disk only sets, you may not have the version of the New American Standard Bible and Concordance you see used in this Tutorial. If you have the SeedMaster CD, you can substitute the King James Version, which has Strong's numbers and the Thayer's Lexicon associated with it, for the NASB. If you purchased a GRAMCORD only Bible Companion from the GRAMCORD Institute without purchasing either the NASB or KJV, the section of this Tutorial which illustrates their usages will, of course, not apply to you. At present only the NASB and KJV have been synchronized to the GRAMCORD Parsed Greek New Testament and its associated tools.



NOTE: If you want a King James Version + Strong's to use either with this Tutorial or permanently, you can download it from <ftp://207.109.44.201/freebies>. The file name is KJV-Str.exe. There are other files there you can download and install as well which will give you a free Nave's Topical and Matthew Henry Concise Commentary ([resources.exe](ftp://207.109.44.201/freebies)), free Psalms' Outlines and fuller Strong's concordance ([strongs.exe](ftp://207.109.44.201/freebies)), a free Greek Textus Receptus ([Greek-Tr.exe](ftp://207.109.44.201/freebies)), etc. Replacement disks can be downloaded from <ftp://207.109.44.201/diskettes>. If you need more information about a replacement diskette, send an email to gntdisks@GRAMCORD.org for more information on downloading and installing replacement diskettes.

Preparing to Use the GRAMCORD Parsed Greek New Testament

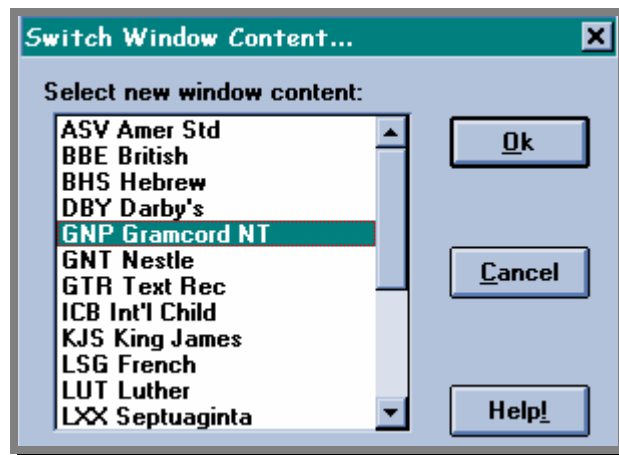
The GRAMCORD Parsed Greek New Testament is Accessed From The Main Screen Of Bible Companion:



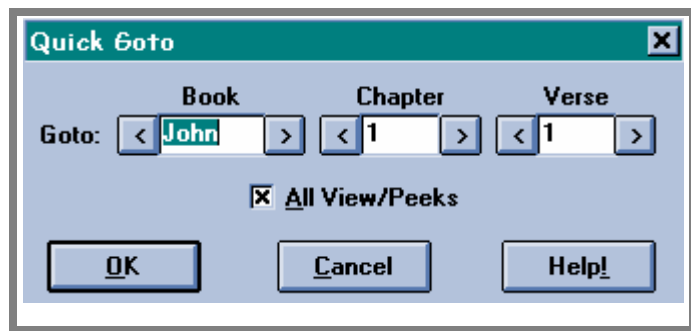
1. Start Bible Companion.
2. Since we want to work exclusively with the GRAMCORD Text at the outset, select from the Menu Bar at the top of the Bible Companion screen: **Window...Close All**.



1. Open up a New Bible Window by clicking once on **the New Bible Window button** on the Bible Companion Button bar (the one which matches the button to the left of this paragraph).
1. Choose the **GNP GRAMCORD (Parsed Greek) NT** (as shown below), click on the **Ok button**, and the GNP will appear.



1. Press **Ctrl-G** on your keyboard to activate the "Quick Go-To" dialogue box. Your cursor will be in the Book box, so type in John and hit Enter to Go To the Gospel of John, Chapter 1, Verse 1.



1 - 4 GRAMCORD Parsings (GNP)



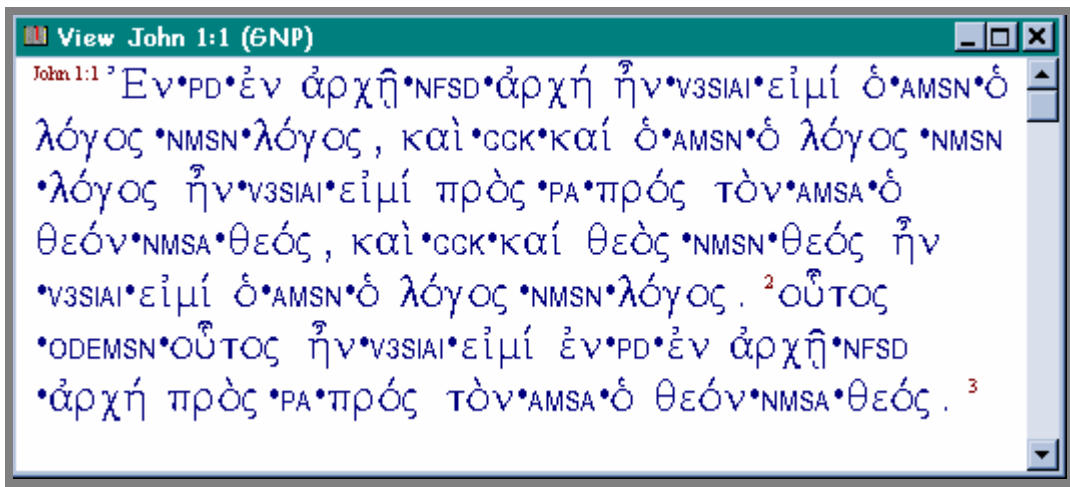
Note: This *Go-To* function was necessary because the GNP will be set to whatever verse you were previously at, and if that was in the Old Testament the Text Window will be basically empty.



Note: In the following examples from the GNP, the text will appear to be simply black and white. However, on the screen the GNP displays with different colors for each part of the Parsing. These colors can be changed through the **Options...Screen Fonts...Change Colors**. The first element, the "Word," is tied to the "Bible Text" Color; the second element, the "Parsing," is tied to the "Hypertext Jumps" color; the third element, the "Lemma," is tied to the "Lexicon" color. Changing those colors will change the corresponding element in the GNP.

The GRAMCORD Parsed Greek New Testament

If you did the above correctly you should now see the GRAMCORD Parsed Greek New Testament (GNP) in the Bible Companion main window, with the **View** set to **John 1:1 (GNP)**.



NOTE: If the Greek Text on your screen doesn't look exactly like the example above, it's probably due to the fact that your font is set to a different size than the one above. Bible Companion comes set to size 19 by default, to provide users with a large, easily readable font size. Most users have found that a font size of 12 is very readable and, thus, allows them to get more text on the screen at one time and have more Text or Commentary Windows open at the same time. To change the font size, choose **Options...Screen Fonts...** from the Menu; then from the Dialogue Box choose **Set Normal (NOT Set Greek)**, and then select the Font Size you desire from the Scroll List of Font Sizes; then choose **OK**. Normal sets the size for all the Texts, even Greek and Hebrew. If you set the Font Size to 12, the GNP would look like the example below.



NOTE: If your screen is no longer full of text after you change the font size, go to *Menu: Options...Screen Format...Verse Buffer Size*. This is set by default to its lowest setting, 30, to conserve memory use. Try raising it by increments of 5 until your entire screen is again full; usually a reading between 40 and 50 will be sufficient.

1 - 6 GRAMCORD Parsings (GNP)

3. **All of the Occurrences of a Particular Morphological/Grammatical Form** of any specific word in the Greek New Testament can be found from the GNP.

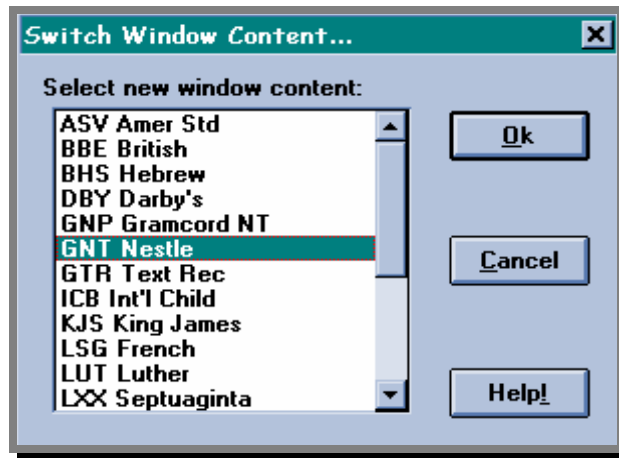
Viewing the Parsing for the Greek New Testament

Above we demonstrated how you get the GRAMCORD Parsed Greek New Testament on the screen. The GNP can be used in conjunction with other versions of the New Testament to provide quick access to parsing information. Following are two examples of the use of the GNP with other New Testament texts, the first with the normal Nestle Greek New Testament and the second with The New American Standard Bible (remember, the NASB can be substituted for by the KJV if that is what you have; if you have neither you will not be able to reproduce that part of the Tutorial.).

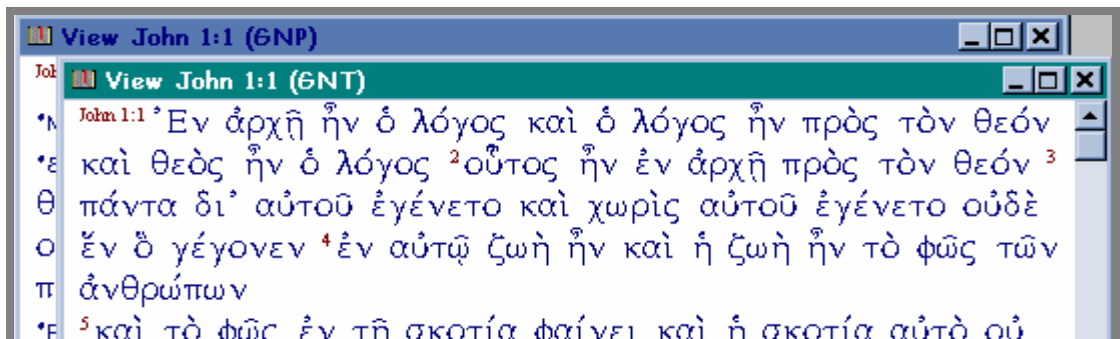
To View the GNP Parallel and Synchronized with the Nestle Text, do the following:



1. Open a new text, by clicking on the **New Bible Window** button.
1. Select the **GNT Nestle** Greek New Testament and Click **Ok**.



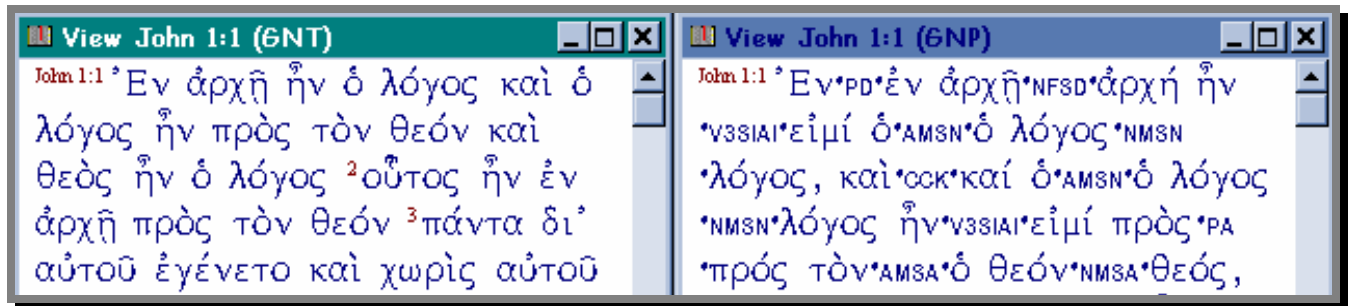
1. The screen will have the GNP and the GNT cascaded on top of one another in the Main Window.



GRAMCORD PARSINGS (GNP) 1 - 7



1. Click on the **Vertical Tile button** (like the one in the left margin) to see the two texts displayed side by side.



NOTE: When you press the **Vertical Tile button**, the text you have chosen as your main text (*i.e.*, the one with the highlighted Ribbon at the top of the text's Window), will be placed on the left side of the screen. If you have more than one text Window Open, the Main Window will be the Top Window on the Left Side of the Screen.



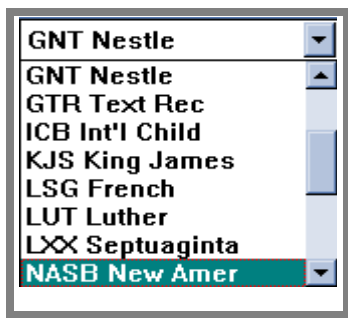
NOTE: Make sure that the **Synchronize button** (at right) on the button bar is depressed so that these two texts will scroll together.



With the GNP and GNT Synchronized Side-by-Side you can read the Greek New Testament and then quickly check the GRAMCORD Parsing for any word. Press the **Up** or **Down Arrow Keys** or the **PageUp** or **PageDown Keys**, or use the Scroll Bar, and move around in the text to see how the Synchronized Scrolling works. Make sure you end up back at John 1:1 for the next part of the Tutorial.

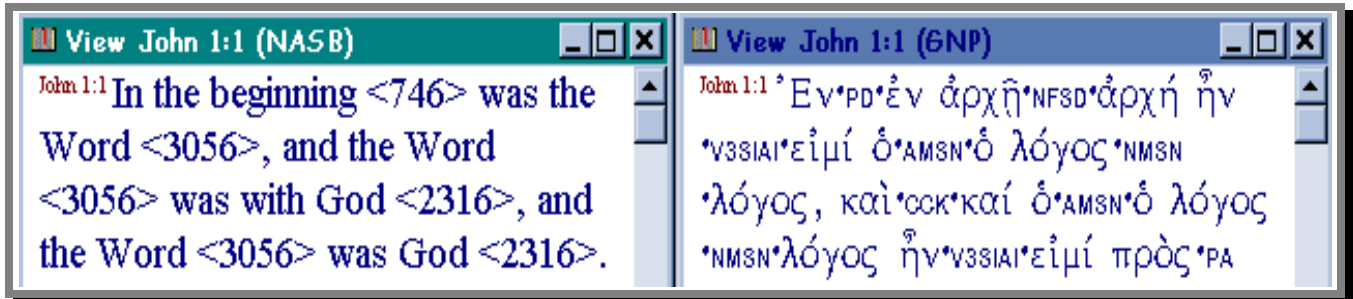
To View the GNP Parallel and Synchronized with an English Translation, do the following:

1. Click on the GNT Window to make it active (you can tell that its the Active Window by the brighter Color of the Title Bar, which reads "View John 1:1 (GNT)").
1. Pull down the **Change window content** List and click on **NASB New Amer** to select the New American Standard Bible as your new Text parallel to the GNP.



1 - 8 GRAMCORD Parsings (GNP)

- Your screen will now have the NASB and GNP side -by-side and synchronized, as below.



NOTE: Make sure that the **Strong's Button** (see right margin) is depressed so that the Strong's Reference Numbers are displayed within the NASB text.



Now as you Read and Study the English Translation you can see both the Greek text and the GRAMCORD Parsings behind the Translation. This, of course, assumes that you know Greek well enough to be able to tell which Greek word lies behind which English word. However, for those who may need a little help figuring out the relationship between the English and the Greek texts, the GNP provides another level of information.

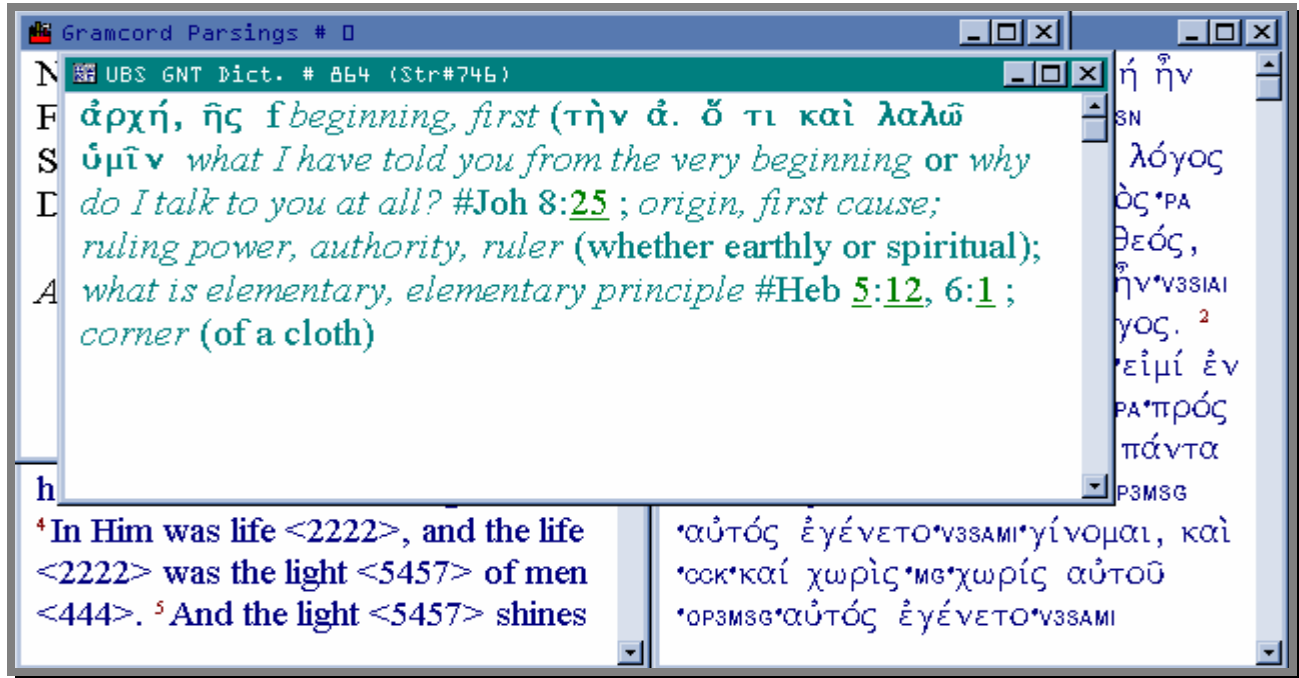
Finding Dictionary and Syntax Information for the Greek New Testament

In addition to the onscreen GRAMCORD Parsings available in the GNP, we have provided other tools to assist you in studying the Greek text. The Greek text (in addition to the Strong's encoded King James Version and New American Standard Bible) has direct access to several Greek dictionaries, the United Bible Societies' *Greek Dictionary*, Thayer's [Abridged] *Lexicon*, and the New American Standard Concordance *Dictionary*. Moreover, from the GNP you have direct access, through hyper-text links, to a complete set of Greek Syntax Notes.

How to Access the GNP Parsing Extensions and Greek Dictionary:

The GNP Parsing Extensions and the United Bible Societies' *Greek Dictionary* are automatically linked to each Parsed Word group in the GNP. To get the Extensions and the Dictionary **Ctrl-Mouse** on the Parsing part of the Parsed Word group. Thus to access the Parsing Extensions and Dictionary for the second word in John 1:1 (ἀρχῆν•NFSD•ἀρχή), you should **hold down the Ctrl key and point your mouse cursor** at the Parsing (NFSD). Bible Companion will bring up two (2) new Windows, one containing the Parsing Extensions, which further explains this specific Parsing, and the other containing the Greek Dictionary for the Lemma of this specific word. Your screen should now look like the following:

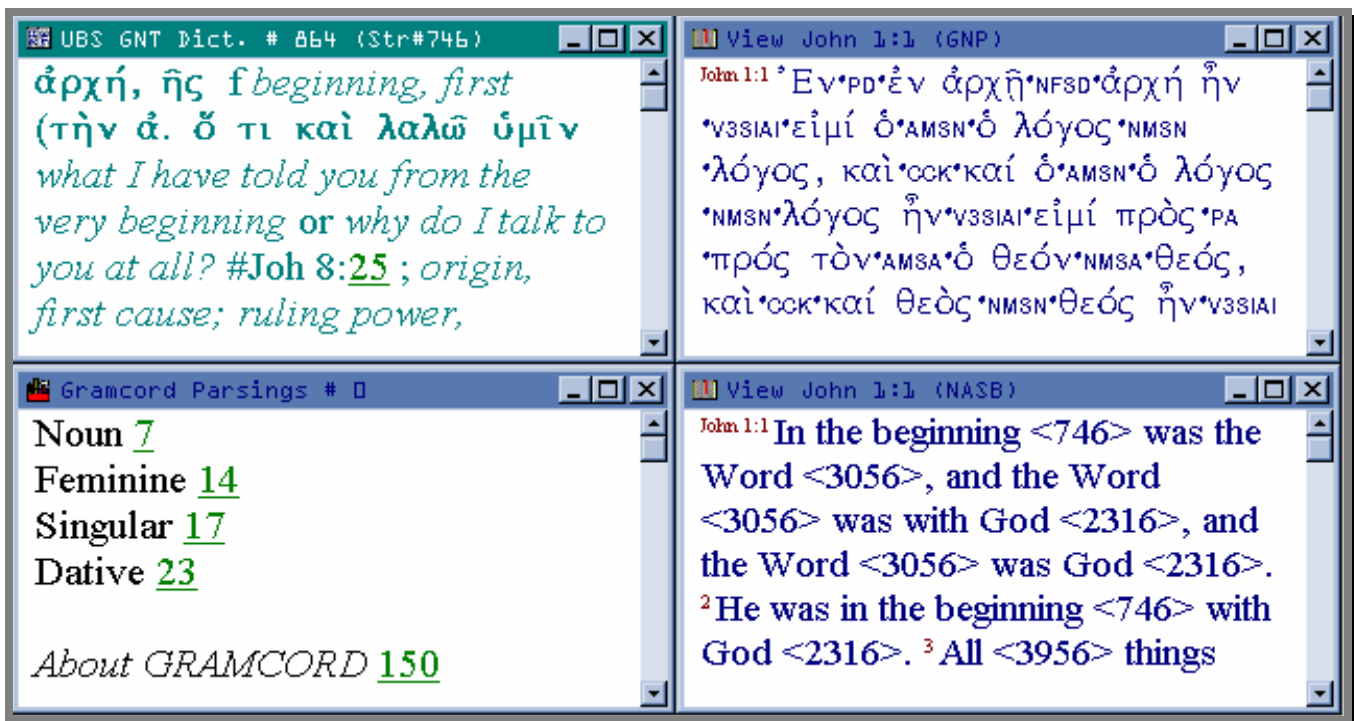
GRAMCORD PARSINGS (GNP) 1 - 9



NOTE: You will note that the Dictionary and Parsing Extensions come up as their own Windows. Bible Companion does this so that you can resize, place, and keep open these Windows, which will continue to be interactive with the GNP, changing every time you choose a new Parsed word in the GNP. For instructions on permanently preserving the Layout as a "Desktop" see the Bible Companion *Users' Manual*, p. 1-8.



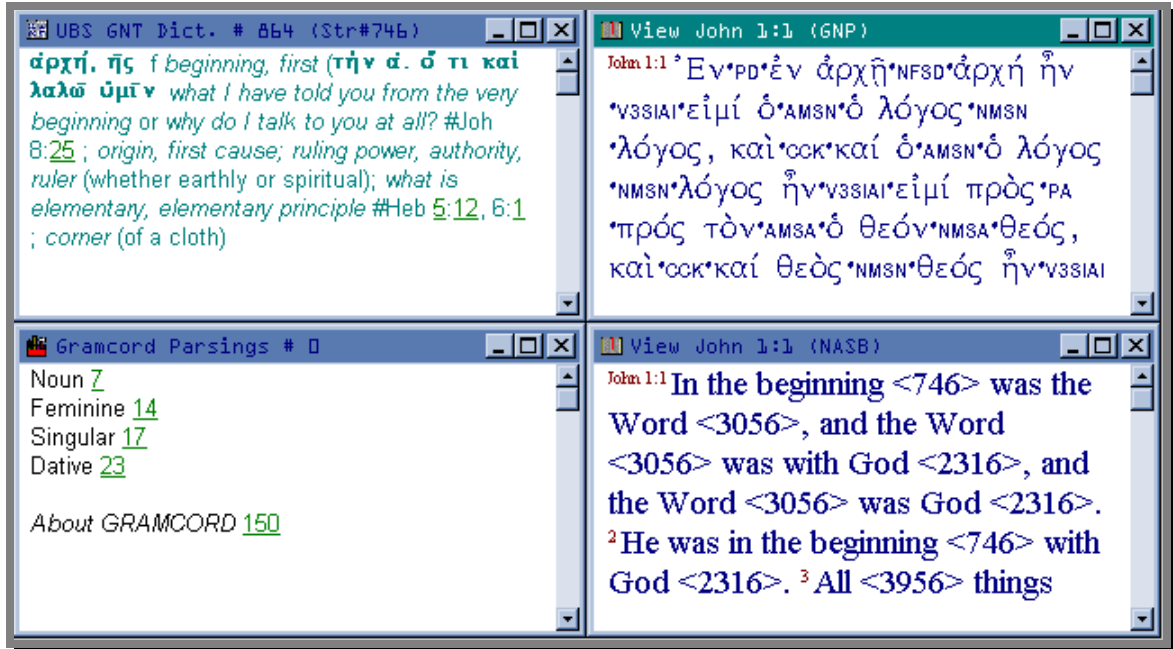
Now click on the **Vertical Tile button** and all four (4) texts will be displayed in their entirety, as below:



1 - 10 GRAMCORD Parsings (GNP)



NOTE: You'll note that the font size of the Dictionary and the Parsing Extensions is considerably larger than the font for the Biblical texts. This is because Bible Companion sets the default font size for all Resource materials (Commentaries, Lexicons, etc.) to seventeen (17). We have personally found that a font size of ten (10) using the font named **ARIEL**, produces a very readable screen (you may however wish to make it smaller or larger). Using ARIEL 10 for Resources will result in a screen which looks like the following:



NOTE: Changing the font size was covered earlier in the Lesson; the only difference for this change is that after selecting **Options...Screen Fonts**, you choose **Set Resource**, and then make the Font Size and Type changes.

How to Use The United Bible Societies' Greek New Testament Dictionary:

In the upper left corner of your screen you can see the UBS GNT Dictionary, which is displaying the entry for the lemma **ἀρχή**, which is the Greek word you Ctrl-Moused on. With the Dictionary now open you can see the definition for the Greek word you are looking at. The use of the Dictionary (e.g., Searching it, Printing it, etc.) is covered in the Bible Companion Manual under those various topics.

One feature to notice on the Dictionary's ribbon bar is that the Strong's number is listed for the Lemma [= (Str#746)]. If you look at the NASB, you'll find the same Strong's number to the right of the English translation of the Greek word you are looking at.

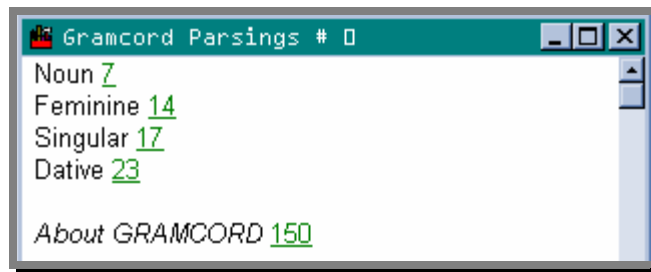


GRAMCORD PARSINGS (GNP) 1 - 11

This will help in those cases where the Dictionary definition may not match exactly the English translation; with the Strong's numbers you can still determine which English word goes with the Greek word you are studying.

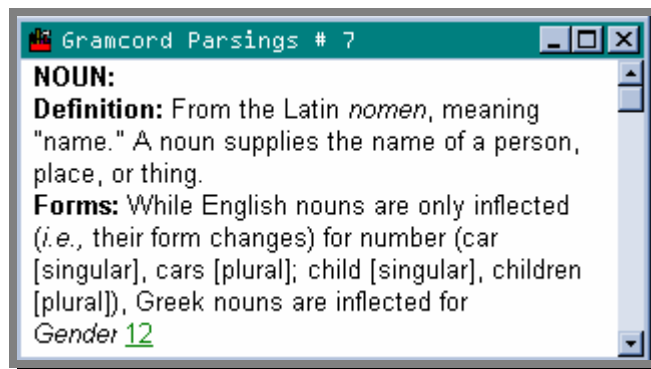
How to Use the GRAMCORD Parsing Extensions and Syntax Notes:

Since there is no way to unambiguously encode an electronic Parsed Greek New Testament, we provide an explanation of the tagging codes in the GRAMCORD Parsing Extensions, which are now in the bottom left corner of the Bible Companion screen. In this case the Parsing Code for ἀρχή is NFSD, which the Parsing Extensions expands:



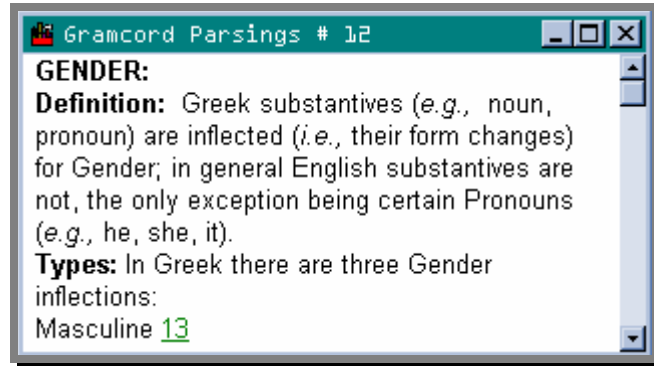
After each Parsing Definition you will note underlined numbers in Green (unless you changed the default colors). These are the hyper-link numbers which take you into the Syntax Notes. If you double click on one of the numbers it will take you to the first level of explanation for the item you have chosen.

Double-click on the number 7 after Noun. Your screen will display the following (*you will need to scroll down to see the rest of the entry*):



You'll note at the bottom of the GRAMCORD Parsings' Window another hyper-link to *Gender*. Double-click on the number 12 to go to the Syntax Notes' discussion of Gender.

1 - 12 GRAMCORD Parsings (GNP)



If you scroll down (or maximize the Window), you will see more hyper-link numbers and the rest of the Syntax discussion about Gender.



NOTE: Bible Companion has a very easy way for you to get back to any previous screen when you are using hyper-link jumps to explore the Syntax Notes (or any other hyper-linked text). You simply click **the RIGHT Mouse button (or press the Esc key)**. Try it now; click the RIGHT Mouse button twice anywhere on the GRAMCORD Parsings' Window (or press Esc twice), and you will return to the original Parsing Extensions' Window, where you started.

Using the GNP and Its Associated Tools with Other Tools

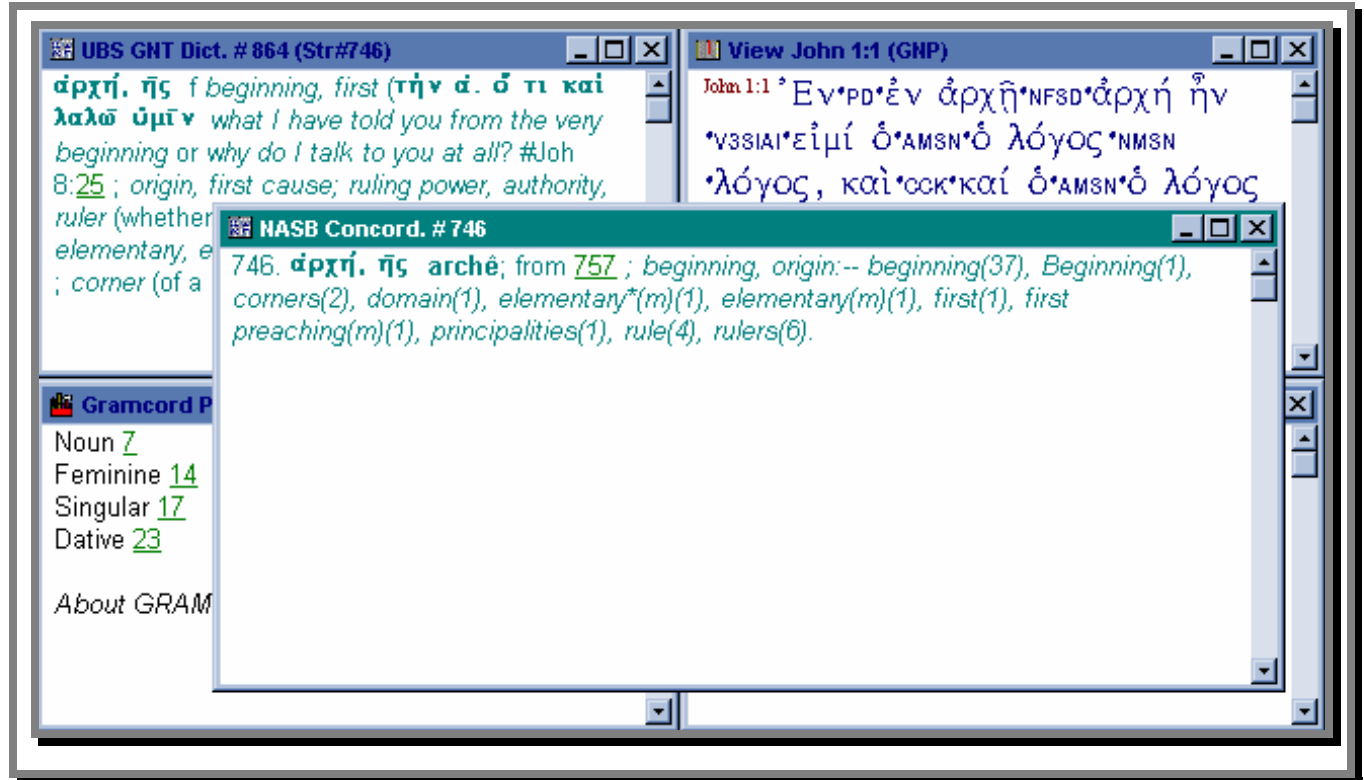
One of the exceptional features of Bible Companion with GRAMCORD is that the various Bible versions and Tools can be synchronized together not only at the Verse level, but some can even be synchronized at the **Word** level. The next section will show you how this works, and how you can use this feature in your own study.

Currently your screen should have four texts on it; the GNP, the NASB, the Parsing Extensions/Syntax Notes, and the UBS Greek Dictionary. These texts are synchronized together on the basis of the Greek word **ἀρχή**, chosen from the GNP. Now we are going to add two more Tools to the display to further enhance the connection between the Greek text and the English text.

The first additional Tool we will add is another Dictionary, the Greek Dictionary from the NASB *Exhaustive Concordance* (If you are using the KJV just follow the same instructions below and the Thayer's Lexicon will come up). To get this Dictionary to display, all you need to do is double-click on any Strong's number associated with any English word in the NASB .

GRAMCORD PARSINGS (GNP) 1 - 13

Double-click now on the number <746> following the word "beginning."
The NASB Dictionary should appear and your screen should look as follows:



The NASB Concordance Dictionary appears at the entry for the Greek word **ἀρχή**, because it is synchronized to the English word "beginning," **AND** the Greek word **ἀρχή** by means of the number link (**746**) which they all share.



The NASB Concordance Dictionary appears Cascaded over the other Windows, to allow you to choose how you want it arranged in this Desktop configuration. To Tile it in with the rest of the Texts simply click on the **Vertical Tile button** again. Your screen should now look like the following:

1 - 14 GRAMCORD Parsings (GNP)

The screenshot displays four windows from the Bible Companion software:

- NASB Concord. # 746:** 746. ἀρχή. ἥς archē; from 757 ; beginning, origin:-- beginning(37), Beginning(1), corners(2), domain(1), elementary*(m)(1), elementary(m)(1), first(1), first preaching(m)(1), principalities(1), rule(4), rulers(6).
- UBS GNT Dict. # 864 (Str#746):** ἀρχή. ἥς f beginning, first (τὴν ἀ. ὅ τι καὶ λαλῶ ὑμῖν what I have told you from the very beginning or why do I talk to you at all? #Joh 8:25 ; origin, first cause; ruling power, authority, ruler (whether earthly or spiritual); what is
- Gramcord Parsings # 0:** Noun 7, Feminine 14, Singular 17, Dative 23
- View John 1:1 (NASB):** John 1:1 In the beginning <746> was the Word <3056>, and the Word <3056> was with God <2316>, and the Word <3056> was God <2316>. ²He was in the beginning <746> with God <2316>. ³All <3956> things <3956>
- View John 1:1 (GNP):** John 1:1 *Εν*ΡD*έν* αρχῆ*NFSD*ἀρχή ἦν *V3SIAI*εἰμί ὁ*AMSN*ὁ λόγος*NMSN *λόγος, καὶ*CCK*καὶ ὁ*AMSN*ὁ λόγος *NMSN*λόγος ἦν*V3SIAI*εἰμί πρὸς*PA

Finding Other Occurrences of a Specific Form

Bible Companion will find every occurrence of a specific form of any Greek word or lemma (not parsings) in the GNP. To do this you highlight the word (not parsings) in the GNP and paste it into the Search window. Then Bible Companion will find and display all the occurrences of that form of the word, whether in the word or lemma position, in the GNP. For this procedure see the Bible Companion Manual, p. 4 -2 *Entering Word/Phrases...Paste Sel[ection].*"

Transferring and Printing GNP Parsings and Search Results

Consult the Bible Companion Manual (10 -5ff.) for details concerning Transferring and Printing GNP Parsings and the Results of GNP Searches to your Windows-based Word Processor.



NOTE: While GRAMCORD with Bible Companion has never had any problems working with Microsoft® Word® or Lotus® AmiPro® or WordPro®, there have been problems reported with WordPerfect® versions 6.1 and 7.0 having to do with their ability to handle TrueType fonts and RTF transfers correctly. We recommend to all GRAMCORD/Bible Companion users that they upgrade to the recently released WordPerfect® 8.0, which apparently solves those problems.

New GRAMCORD Tags

Alternate and “Used As” Tags

GRAMCORD has always had numerous “Alternate” tags for ambiguous grammatical situations. For example, is **γινώσκετε** Matt 24:33 an Indicative or Imperative; GRAMCORD has the word tagged both ways to show the alternate possibilities, with the Alternate surrounded by Curly Braces.

For this new version of GRAMCORD (database version 5.0) a whole host

γινώσκετε•V2PPAI•**γινώσκω**{**γινώσκετε**•V2PPAM•**γινώσκω**}

of new Alternate and “Used As” Tags have been added. These will all have the second part surrounded by Curly Braces. One significant example of the new “Used As” Tags is the Nominative Forms which have Vocative Function. For example, in Ephesians 6:1 children are addressed, and both the Article and the Noun are given the Nominative followed by the “Used As” Vocative tag:

6:1 **Τὰ**•ANPN•**τό**{**Τὰ**•ANPV•**τό**} **τέκνα**•NNPN•**τέκνον**{**τέκνα**•NNPV•**τέκνον**},

Foreign Word Tags

With this version of GRAMCORD (database version 5.0) we have introduced a brand new tag to identify the Foreign Words in the Greek New Testament. In deciding what is a “Foreign Word” in the GNT we are following the decisions of BAGD, who apparently have classified ten words as Foreign primarily based on the fact that they are reported in the GNT in “transliteration” and then translated into Greek (for more details, see the GRAMCORD Technical Manual).

These ten words are: **αλληλουια, ελωι, εφφαθα, ηλι, κουμ, λεμα, μαραναθα, σαβαχθανι, ταλιθα, ωσσαννα.** While some might feel that **ταβιθα** should also be in this list, BAGD does not classify it as such, and we are following BAGD’s choices “religiously” when possible.

The Tags used to identify these Foreign words are:

- **FA** - Foreign, Aramaic
- **FH** - Foreign, Hebrew

“Used As” **Alternate Tags** are also provided for each of these words in order to approximate how they are functioning. You must, however, be cautious in assuming that these “Used As” tags fully represent the original’s use, since there are parts of Hebrew and Aramaic words which cannot be accounted for with Greek tags. For example, **σαβαχθανι** is “Used As”

1 - 16 GRAMCORD Parsings (GNP)

parsed as V2SAAI (Verb, 2nd Sing Aor Act Ind), but in Aramaic there is no “Aorist” tense (it just happens to be the closest to the Aramaic usage) and this verb has a 1st Sing Object Suffix, which cannot be represented by Greek tags at all.

Conclusion

The GRAMCORD Parsed Greek New Testament running with Bible Companion provides you with powerful tools for analyzing and interpreting the (Greek) New Testament.

Addendum: Typing in Greek

How to Use the GREEKPAR.TTF Font

The Greek font used in GRAMCORD and Bible Companion is called GREEKPAR.TTF. The locations of the consonants and vowels for this font are generally straightforward, but the diacritics need to be explained. Below is a Keyboard map for the font. To enter any diacritic simply type the vowel or rho you want the diacritic to appear with, followed by the diacritic. The accent and/or breather will automatically position itself with the vowel or rho. Since diacritics must appear in front of capital letters, first hit the space bar one time, followed by the diacritic, followed by the appropriate capital form of the vowel or rho.



Microsoft® Word® Users: Uncheck box at: Tools...Autocorrect (or: Tools ...Options... Auto-Format) Change Straight Quotes to Smart Quotes; otherwise final sigma will be turned into a quote mark when typed.

Keyboard Layout of GREEKPAR.TTF

~ ~	! 1	” 1	@ 2	” 2	# 3	” 3	\$ 4	” 4	% 5	” 5	^ 6	” 6	& 7	” 7	* 8	” 8	(9	[9) 0] 0	_ -	- -	+ =	+ ’	Back-Space
Tab	Q Θ	W Ω	E Ε	R Ρ	T Τ	Y Ψ	U Υ	I Ι	O Ο	P Π	{ } “ ”	[] ^													
Caps	A Α	S Σ	D Δ	F Φ	G Γ	H Η	J ς	K Κ	L Λ	: ;	” ς	Enter													
Shift	Z Ζ	X Ξ	C Χ	V ς	B Β	N Ν	M Μ	< ,	> .	? /	Shift	ς													
Ctrl	Alt	Space Bar																				Ctrl	Alt		

- Type the diacritic after the vowel/rho for automatic overstriking.
- Gray-shaded diacritics are for use with the narrow vowel iota.
- For Capitals, hit the space bar one time, followed by the diacritic, followed by the appropriate capital form of the vowel or rho.

Greek Character Locations for GRAMCORD with Bible Companion Greek Font (GREEKPAR.TTF)

Alpha - A	Smooth breather - regular * ; narrow j
Beta - B	Rough breather - regular & ; narrow J
Gamma - G	
Delta - D	Acute accent - v
Epsilon - E	Grave accent - V
Zeta - Z	Circumflex- regular ~ or ' ; narrow `
Eta - H	
Theta - Q	Smooth + acute - regular ! ; narrow [
Iota - I	Smooth + grave - regular # ; narrow]
Kappa - K	Smooth + circumflex - regular ^ ; narrow \
Lambda - L	
Mu - M	Rough + acute - regular @ ; narrow {

1 - 18 GRAMCORD Parsings (GNP)

Nu - N	Rough + grave - regular \$; narrow }
Xi - X	Rough + circumflex - regular % ; narrow
Omicron - O	
Pi - P	Dieresis - >
Rho - R	Dieresis + acute - ?
Sigma - S	Dieresis + grave - <
Final Sigma - "	
Tau - T	Iota Subscript - /
Upsilon - U	
Phi - F	Apostrophe - =
Chi - C	
Psi - Y	Punctuation where expected
Omega - W	